

# EXHIBITOR & SPONSORSHIP ..... PROSPECTUS .....



**Ci2018**

**15<sup>th</sup> International Conference  
on Cochlear Implants and  
other Implantable  
Auditory Technologies**

**2018**

**Antwerp, Belgium  
June 27-30, 2018**

*Final edition*

..... [www.Ci2018.org](http://www.Ci2018.org)



## At CI2018 Conference

- Established in 1959, this is the premier event to showcase novel and innovative research in cochlear implants
- Over 1500 delegates coming from all over the world
- 4 state of the Art Satellite symposia from our Partners
- International leading researchers across a wide range of disciplines
- 3,5 days exhibition
- An ideal environment to meet and share experience with over 2000 participants coming from all over the world
- An innovative programme featuring state of the art interactive sessions
- Outstanding and motivating speakers and experts in all sessions
- A networking welcome reception
- A wonderful gala dinner

Dear Madam,  
Dear Sir,

As President of the Ci2018 Congress,

I have the great pleasure to announce that the International Conference on Cochlear Implants and other Implantable Auditory Technologies will be held in Antwerp (Belgium) , **from June 27 to 30, 2018.**



CI2018, the Fifteenth International edition of the Conference in Antwerp - Belgium, will bring a unique opportunity to get acquainted with the latest exciting developments in the field of Cochlear Implants and Implantable Auditory Technologies. This time in Antwerp , up to 1500 participants from all over the world are expected to attend the meeting.

Both the exhibition and the congress will be held in an exhibition center located in Antwerp , The Flanders Meeting & Convention Center.

The conference is offering companies the opportunity to take an active part in this congress becoming a partner or an exhibitor of the CI2018 conference and to meet and interact with renowned international scientists and experts from academia and industry.

It is the aim of the conference to provide a forum for discussion, exchange of new ideas, for the establishment of new friendships and collaborations and for the dissemination of recent acquired knowledge in an area of utmost scientific and technological importance.

In the following pages, various sponsorship options are listed, of which partners may select different items according to their interests and financial means. We would kindly welcome any suggestions about other possibilities of collaboration. In addition to the general sponsorship of single items, the congress organizers are offering companies the opportunity to become a major sponsor.

We offer a range of attractive sponsorship options with the aim of ensuring that participating companies receive the highest possible recognition for their support and the greatest impact towards the Ci2018 conference participants. We will appreciate your support for this meeting and are committed to welcome you as an active partner of the CI2018.

The Local Organizing Committee is looking forward to your active participation and commitment to the congress.

Yours sincerely,

Prof. Dr. Paul Van de Heyning



## Destination : ANTWERP/BELGIUM

### ANTWERP, CAPITAL OF THE WORLD OF DIAMANDS.

Antwerp, a busy pocket-sized metropolis, has something for everyone. The city is an inspiring source of culture thanks to its impressive architecture and magnificent museums and churches. Fashionistas can explore the stores of Antwerp's designers, whose stylish creations are revered all over the world. And foodies and people with a passion for life in general will enjoy the warm welcome of Antwerp's cafés and restaurants. A visit to Antwerp should definitely include the new museum MAS, the Cathedral of Our Lady and the Rubens House.

Antwerp is the city that strongly believes that you can always do things just that little bit differently. Enjoy architectural feats such as the Antwerp Law Courts, the Bourla Theatre and MAS I Museum aan de Stroom. Treat yourself to dishes from all over the world. Explore the shopping streets with the many high-end shops and unique concept stores. Take a stroll along the River Scheldt and gaze at the port from afar. Don't forget to visit the diamond district. And what about museums like the Rubens House, the Red Star Line Museum and Museum Plantin-Moretus. With world-class collections in a unique setting. Discover why our city is different from other cities. Discover Atypical Antwerp.

## Venue: The Elisabeth Center Antwerp

The new Flanders Meeting & Convention Center antwerp is without doubt the most versatile and lustrous pearl in the crown of the current Meeting Industry (MICE). This new venue will set the absolute standard in Antwerp for exhibitions, trade shows and expositions, seminars, national and international conferences and for all kinds of business events.

As the nerve centre and the dynamic, pulsating heart of the convention centre, the centrally located new 1880 seat auditorium is a key asset for event and meeting organisers. With this new Meetings Industry temple, initiator antwerp Zoo society has adopted the technical and logistic possibilities of the 21st century in full harmony





# Programme

## Wednesday 27 June 2018

- Opening / Welcome
- Satellite Symposia 1 --> 4
- Opening Ceremony
- Welcome reception & Meet the experts (Diamond reception)
- Opening Exhibition

## Thursday 28 June 2018

- Keynote Lectures
- Tutorials
- Scientific sessions
- ePoster sessions
- Video sessions
- Round Tables
- Interactive Poster Communications

## Friday 29 June 2018

- Keynote Lectures
- Tutorials
- Scientific sessions
- ePoster sessions
- Video sessions
- Round Tables
- Interactive Poster Communications

## Saturday 30 June 2018

- Keynote Lectures
- Tutorials
- Scientific sessions
- ePoster sessions
- Interactive Poster Communications
- Video sessions
- Closing session

# Programme

Preliminary (14/02/2017)

| Time  | Mon Tue            | Wed 27/6<br>Hall Queen<br>Elisabeth | Thu 28/6<br>Hall Queen<br>Elisabeth | Thu 28/6<br>all rooms               | Thu 28/6<br>Hands-on<br>ShortPostCom | Fry 29/6<br>Hall Queen<br>Elisabeth | Fry 29/6<br>all rooms               | Fry 29/6<br>Hands-on<br>ShortPostCom | Sat 30/6/2018<br>Hall Queen<br>Elisabeth | Sat 30/6/2018<br>all rooms          | Sat 30/6/2018<br>Hands-on<br>ShortPostCom |
|-------|--------------------|-------------------------------------|-------------------------------------|-------------------------------------|--------------------------------------|-------------------------------------|-------------------------------------|--------------------------------------|--|-------------------------------------|---|
| 7u30  |                    |                                     | Instr session                       | Instr session                       |                                      | Instr session                       | Instr session                       |                                      | Instr session                            | Instr session                       |   |
| 8u    | Pre                |                                     |                                     |                                     |                                      |                                     |                                     |                                      |  |                                     |   |
| 8u30  | Conference         |                                     | Keynote<br>Plenary                  |                                     |                                      | Keynote<br>Plenary                  |                                     |                                      | Keynote<br>Plenary                       |                                     |   |
| 9u30  |                    |                                     | Panel/Symp                          | Panel/Symp                          | Interactive Poster<br>communication  | Panel/Symp                          | Panel/Symp                          | Interactive Poster<br>communication  | Panel/Symp                               | Panel/Symp                          | Interactive Poster<br>communication       |
| 10u   | Activities         |                                     |                                     |                                     | Interactive Poster<br>communication  |                                     |                                     | Interactive Poster<br>communication  |  |                                     | Interactive Poster<br>communication       |
| 10u30 |                    |                                     | coffee break                        |                                     |                                      | coffee break                        |                                     |                                      | coffee break                             |                                     |   |
| 11u   |                    |                                     | Keynote                             |                                     |                                      | Keynote                             |                                     |                                      | Panel/Symp                               | Panel/Symp                          | Interactive Poster<br>communication       |
| 11u30 |                    |                                     | Panel/Symp                          | Panel/Symp                          | Interactive Poster<br>communication  | Panel/Symp                          | Panel/Symp                          | Interactive Poster<br>communication  |  |                                     | Interactive Poster<br>communication       |
| 12u   |                    |                                     |                                     |                                     | Interactive Poster<br>communication  |                                     |                                     | Interactive Poster<br>communication  | Keynote                                  |                                     |   |
| 12u30 |                    |                                     | lunch                               |                                     |                                      | lunch                               |                                     |                                      | Plenary                                  |                                     |   |
| 13u   |                    |                                     |                                     |                                     | Interactive Poster<br>communication  |                                     |                                     | Interactive Poster<br>communication  |  |                                     | Lunch                                     |
| 13u30 | comp1<br>symposium | Keynote                             |                                     |                                     |                                      | Keynote                             |                                     |                                      |  |                                     |   |
| 14u   |                    | Panel/Symp                          | Panel/Symp                          | Interactive Poster<br>communication |                                      | Panel/Symp                          | Panel/Symp                          | Interactive Poster<br>communication  |  |                                     |   |
| 14u30 | comp2<br>symposium |                                     |                                     | Interactive Poster<br>communication |                                      |                                     |                                     | Interactive Poster<br>communication  |  |                                     |   |
| 15u   | comp3              | coffee break                        |                                     |                                     | Interactive Poster<br>communication  | coffee break                        |                                     |                                      |  |                                     |   |
| 15u30 | comp3              | Keynote                             |                                     |                                     |                                      | Keynote                             |                                     |                                      |  |                                     |   |
| 16u   | comp4<br>symposium | Panel/Symp                          | Panel/Symp                          | Interactive Poster<br>communication |                                      | Panel/Symp                          | Panel/Symp                          | Interactive Poster<br>communication  |  |                                     |   |
| 16u30 | comp4              |                                     |                                     | Interactive Poster<br>communication |                                      |                                     |                                     | Interactive Poster<br>communication  |  |                                     |   |
| 17u   | comp4<br>symposium | Keynote                             |                                     |                                     |                                      | Keynote                             |                                     |                                      |  |                                     |   |
| 17u30 | Opening            | Interactive Poster<br>communication | Interactive Poster<br>communication | Interactive Poster<br>communication | Interactive Poster<br>communication  | Interactive Poster<br>communication | Interactive Poster<br>communication | Interactive Poster<br>communication  | Interactive Poster<br>communication      | Interactive Poster<br>communication | Interactive Poster<br>communication       |
| 18u   | Reception          |                                     |                                     |                                     |                                      |                                     |                                     |                                      |  |                                     |   |
| 18u30 |                    |                                     |                                     |                                     |                                      |                                     |                                     |                                      |  |                                     |   |
| 19u   |                    |                                     |                                     |                                     |                                      |                                     |                                     |                                      |  |                                     |   |
| 19u30 |                    | company                             | dinner                              |                                     |                                      | conference                          | dinner                              |                                      |  |                                     |   |
| 20u   | Chairman<br>Dinner |                                     |                                     |                                     |                                      |                                     |                                     |                                      |  |                                     |   |
| 21u   |                    |                                     |                                     |                                     |                                      |                                     |                                     |                                      |  |                                     |   |
| 22u   |                    |                                     |                                     |                                     |                                      |                                     |                                     |                                      |  |                                     |   |

**IMPORTANT:**

- Parallel sessions in 5 rooms:  
 - Main room 'Elisabeth'  
 - 4 Breakout rooms  
 - more small rooms for workshops





# SPONSORSHIP PACKAGES

## Levels of contribution

The different opportunities are listed in the following pages: exhibition, sponsorship and satellite symposia. Companies can select multiple items up to the amount of the financial support they can offer. Depending on the total spent and thus on the level reached, they might be recognized as an official Sponsor of the congress and benefit from the following privileges:

| Benefits  | Bronze<br>€ 1.500 | Silver<br>€ 5.000 | Gold<br>€ 15.000 | Platinum<br>€ 40.000 | Platinum <sup>+</sup><br>€ 50.000 | Diamond<br>€ 80.000 |
|---|-------------------|-------------------|------------------|----------------------|-----------------------------------|---------------------|
| <b>Bronze</b><br>Company logo posted on website<br>Company logo in Final Programme<br>No Exhibitor Badge<br>No booth included<br>1 Roll-up display (1m x 2m)  |                   |                   |                  |                      |                                   |                     |
| <b>Silver</b><br>Company logo posted on website<br>Company logo in Final Programme<br>1 Full Exhibitors Badge (access to sessions)<br>4 sqm booth with one table and 2 chairs   |                   |                   |                  |                      |                                   |                     |
| <b>Gold</b><br>Company logo in Final Programme<br>Company logo posted on the congress website<br>5 Full Exhibitors Badges (exhibition and sessions)<br>6 sqm booth with one table and 2 chairs<br>List of participants after the congress   |                   |                   |                  |                      |                                   |                     |
| <b>Platinum</b><br>Company logo package<br>8 Full Exhibitors Badges (exhibition and sessions)<br>30 sqm booth with one table and 2 chairs (**)<br>List of participants after the congress<br>1 insert in the congress bag   |                   |                   |                  |                      |                                   |                     |
| <b>Platinum<sup>+</sup></b><br>Platinum package **<br>+ Company Satellite Symposium on Wednesday 27 June 2018, during slots not taken by Diamond sponsors   |                   |                   |                  |                      |                                   |                     |
| <b>Diamond</b><br>Company logo package, Logo on website with hyperlink, logo in Final Programme<br>Unlimited number of full registrations at the early registration fee<br>10 Full Exhibitors Badges (incl. sessions)<br>60 sqm booth on prime location, First priority in choice of exhibition location on exhibition floor<br>List of participants before and after the congress<br>2 insert in the congress bag - 4 push messages via Congress APP<br>Company Satellite Symposium on Wednesday 27 June 2018 (limited to 4)<br>Company Lounge / Innovation room for your company to entertain your visitors<br>Automatic Member of the Scientific Grants Project Ci2018: Invitations for young researchers to attend<br>Priority choice of items in list of other Sponsors packages |                   |                   |                  |                      |                                   |                     |

• Including name, specialty and country (no telephone, e-mail or postal address)

(\*\*) We also present the **Platinum<sup>++</sup>** option: the elements from the Platinum package + a small hospitality lounge on the 1st floor !!



**Bronze**

**1.500 Euro**

Company logo Package (logo on website, logo in Final Programme)  
 No Exhibitor Badge; No booth included  
 1 Roll-up display (1m x 2m) in exhibition area

**Silver**

**5.000 Euro**

Company logo Package  
 1 Full Exhibitors Badge (incl. access to sessions)  
 6 sqm booth with one table and 2 chairs

**Gold**

**15.000 Euro**

Company logo Package  
 5 Full Exhibitors Badges (exhibition and sessions)  
 12 sqm booth with one table and 2 chairs  
 List of participants after the congress  
 1 Insert in to the Congress Bags

**Platinum**

**40.000 Euro**

Company logo package  
 8 Full Exhibitors Badges (exhibition and sessions)  
 30 sqm booth with one table and 2 chairs (\*\*)  
 List of participants after the congress•  
 2 insert in the congress bag

• Including name, specialty and country (no telephone, e-mail or postal address)

**Platinum<sup>+</sup>**

**50.000 Euro**

Platinum package  
 + Company Satellite Symposium on Wednesday 27 June 2018, during slots not taken by Diamond sponsors

**Platinum<sup>++</sup>**

**60.000 Euro**

Platinum package  
 + Company Satellite Symposium on Wednesday 27 June 2018, during slots not taken by Diamond sponsors  
 + Small Hospitality Lounge on the 1st Floor

**Diamond**

**80.000 Euro**

Company logo package, Logo on website with hyperlink, logo in Final Programme  
 Unlimited number of full registrations at the early registration fee  
 10 Full Exhibitors Badges (incl. sessions)  
 60 sqm booth on prime location(\*\*) First priority in choice of exhibition location on exhibition floor  
 List of participants before and after the congress•  
 2 insert in the congress bag - 4 push messages via Congress APP

Company Satellite Symposium on Wednesday 27 June 2018 (limited to 4)

Company Lounge / Innovation room for your company to entertain your visitors

Automatic Member of the Scientific Grants Project Ci2018: Invitations for young researchers to attend

Priority choice of items in list of other Sponsors packages

• Including name, specialty and country (no telephone, e-mail or postal address)



# Other Sponsor Packages

## Gala Dinner Sponsor

The Gala dinner will take place at a special venue on Friday 29th June 2018. The dinner is not included with the registration and delegates wishing to attend the dinner need to pay for their reservation. Of course your company will be clearly noted as the sponsor in the congress program and at the dinner.



## Wifi Internet Sponsor

Be the exclusive sponsor of the wireless network that allows delegates to stay connected at the event. This sponsor will have the delegate pass through a dedicated webpage with his logo.



## Exhibition Coffee Break Sponsor

Conference attendees love a complimentary cup of coffee between sessions! This sponsorship includes napkins branded with your company logo (one color), recognition on signs at the coffee stations, and overall sponsorship recognition.



## Congress Bag Sponsor

Sponsors will have the opportunity to provide congress bags displaying their name and logo which will be distributed to delegates.



## Lounge area

Take this opportunity to market your company and leave a lasting impression with conference attendees as we wrap up with a cocktail to celebrate all of our achievements. Display your company's literature and signage during the cocktail event.



## Lanyard Sponsor

Capture the attention of thousands as attendees wear your company's name around their necks and are seen throughout the entire event. This invaluable marketing item will be offered to each and every attendee as they pick up their badge.



## Full Congress App

The App allows attendees to navigate the expo floor, Voting online and questions for the speakers, view the schedule. Sponsorship of the mobile App will include the company logo and menu pages, a promoted post and welcome message for attendees, and one App notification to be written by the sponsor, approved and scheduled by organizing management.



## Pen Sponsor

Make a lasting impression! Promote your logo on the official event pen, and turn every full-conference attendee into a branding vehicle for your company. This handy pen is sure to be used long after the event, keeping your brand in the hands of potential customers.



## Water Station Sponsor

Water dispensers will be located in various areas of the venue and will be highly frequented by delegates thus posing a great & highly visible branding opportunity.



## Phone Charging Stations

Delegates will be able to charge their mobile devices during the event by using lockable charging stations. Whilst being a useful tool, the stations offer an excellent branding opportunity. The large screens built into the charging stations allow you to advertise to a captive audience.



## Push messages on Congress APP

Inform participants of what happens on your Company Booth - Invite participants to your events - remind them of your products.





## EXHIBITION

### Wednesday 27th, Thursday 28th and Friday 29th June 2018

An interactive exhibition of state of the art instrumentation will take place over 3,5 days at the conference. Companies exhibiting will have the opportunity to meet and interact with participants with a focused interest on Cochlear Implants.

#### Exhibition packages

- The exhibition will take place over 3,5 days.
- Lunch and refreshments will be served in the exhibition area during the exhibition.
- The exhibition will take place where coffee breaks and lunches will be organised
- The minimal size of the exhibition booth is related to the partner type.(gold, silver..)
- The space is suitable for pop-up banners, will be equipped with one table and two chairs; larger spaces are available at additional cost.
- We would like to give you the Opportunity to expand your exhibition area

## ADDITIONAL SPONSORSHIP OPPORTUNITIES

Companies exhibiting will have the opportunity to suggest alternatives.

The Organising Committee will consider every single proposal, within the restrictions of the Congress venue and the possibilities available.

## Why exhibit?

- Demonstrate the range and quality of your products and services to a specialised audience.
- Maximise your exposure within the scientific community.
- Target new customers and build existing relationships.
- Showcase new or upgraded product ranges.
- Company logo and link on the conference website exhibition page along with a short company profile.
- Company logo and profile in the delegate handbook.
- In the week prior to the conference a broadcast email will be sent to all delegates dedicated to the exhibition with links to all the companies that are taking part.



## Exhibit Rules and Regulations

The exhibition will take place on the ground floor of the FMCCA in the Atrium, where all coffee breaks and lunches will be served.

### Regulations

All products and services must be approved by Semico nv in its sole and absolute discretion. All products and services exhibited at CI2018 shall comply with the Belgian Drug Administration and governmental regulations.

### Booth rate and payment schedule

No applications will be processed without full payment. A deposit of 50 % is due upon receipt of application. Full payment is due by March 15, 2018. Failure to submit full payment by this date may result in cancellation of space and a penalty. All applications received after March 15, 2018 must be received with full payment.

### Exhibit Cancellation Policy

Cancellation of exhibit space after March 15, 2018 will result in a penalty of 100% of the total cost of the space assigned

### Display and Limitations

All display areas will be marked off by the Semico Exhibition Manager. Maximum height of any free-form exhibit, including signs, may not exceed 3m or 4,5 meters, depending of the location on the exhibition floor.

Fire code regulations, prohibit storage of any any materials behind booths. All items for storage must be properly labeled and marked. Empties will be removed prior to the opening. Any items stored behind the booth will be removed and considered refuse. Exhibitors requiring storage of product must make arrangement with the Semico Exhibition Manager.

A guarantee of 500 euro will be paid by the exhibitor for the removal of any garbage left after the construction or dismantling of the Exhibition Booth. The representative of the exhibitor must ensure that all the garbage is removed from the exhibition floor in that case the guarantee will be refunded, in the other case the amount will be used for cleaning.

### Installation/Exhibition Hours/Dismantling

Morning and afternoon breaks as well as the walking lunches will be served every day in the exhibition Hall. The following is the preliminary exhibition schedule

| INSTALLATION      |                   |
|-------------------|-------------------|
|                   |                   |
| OPEN HOURS        |                   |
| Wednesday June 27 | 8:00 am - 5.30 pm |
| Thursday June 28  | 8:00 am - 5.30 pm |
| Friday June 29    | 8:00 am - 5.30 pm |
| Saturday June 30  | 8:00 am - 2.30 pm |
| DISMANTLING       |                   |
| Saturday June 30  | 2:30 pm - 7.30 pm |

### Assignment of Space

The assignment of exhibition space will be done on a first come, first served bases. Date of receipt of application will guide the assignment of booth space. Only one company may be represented per space assignment. Subletting of exhibition space is prohibited.

### Exhibitor Representatives

Booths must be staffed at all times during the exhibition hours. Each exhibiting company will receive a specific number of complimentary badges based upon the partner level they assigned to, provided representatives are registered in advance.

Additional and replacement badges are available for purchase.

## Why sponsor?

- An opportunity to promote your organization and raise your profile within the wider community.
- Promote your company name to national and international participants prior to, during and after the conference – these include decision makers, scientists and students.
- Demonstrate your commitment to assisting the development of young researchers.
- Your representatives can mix informally with professionals from industry and academia from all around the world.
- Your support of the conference will be acknowledged widely through web-based and printed material.
- Sponsorship contributes significantly to the promotion, planning and operation of the conference, reducing the overall cost of managing the event and enabling a higher level of participation.



### Jurisdictions

The venue will control access to the loading docks in order to provide for a safe and efficient move-in and move-out.

### Liability/Insurance

Each party involved in the exhibition (venue, Semico Group and the exhibitor) agrees to be responsible for any claims arising out of their own negligence or that of their employees or agents. Each party agrees to be responsible for their own property through insurance or self-insurance and shall hold harmless each of the other parties for any and all damage caused by theft and those perils normally covered by a fire and extended coverage policy.

### Security

Semico Group Exhibition Management cannot guarantee nor assume any liability against loss or damage of any kind but will endeavor to protect exhibitors asking the venue to lock the doors after congress hours and providing a security guard.

### Special restrictions

- Any activity in the exhibition aisles is strictly prohibited.

- Prizes, drawings and lotteries in



conjunction with CI2018 need to be approved by the local Organising Committee of CI2018.

- Exhibitors may use audio equipment if such equipment does not interfere with or become objectionable to adjacent exhibitors or Semico Group Exhibition Management.

- Exhibitors' activity must be confined to their booth space. All Social activities must be approved by Semico Group Exhibition Management.

- Fire hose cabinets and exits must be left accessible and in full view at all times. Decorations and displays must either be of nonflammable material or be treated by an approved fire prevention method. All display material must be flame proofed and is subject to inspection by Antwerp Fire department and the security specialist of the Venue. No flammable fluids or substances may be used or shown in the booths.

- The Flanders Meeting & Convention Center Antwerp is completely non-smoking. All smoking is confined to designated smoking areas outside the building.

## To sum it up, the benefits to exhibitors and sponsors:

- Build visibility for your company in a competitive marketplace
- Target highly influential decision makers and opinion leaders
- Interact face-to-face with 1500 professionals from across the world
- Give products and services demonstrations, expanding your prospect base and generating new sales leads
- Ensure interaction between suppliers and customers
- Ample networking opportunities with direct access to key opinion leaders
- Establish strategic partnerships
- See emerging innovations and gain exposure to patented new technologies
- Expand loyalty and build opportunities with existing clients
- Give maximum exposure for your company and increase brand awareness position for your Organisation

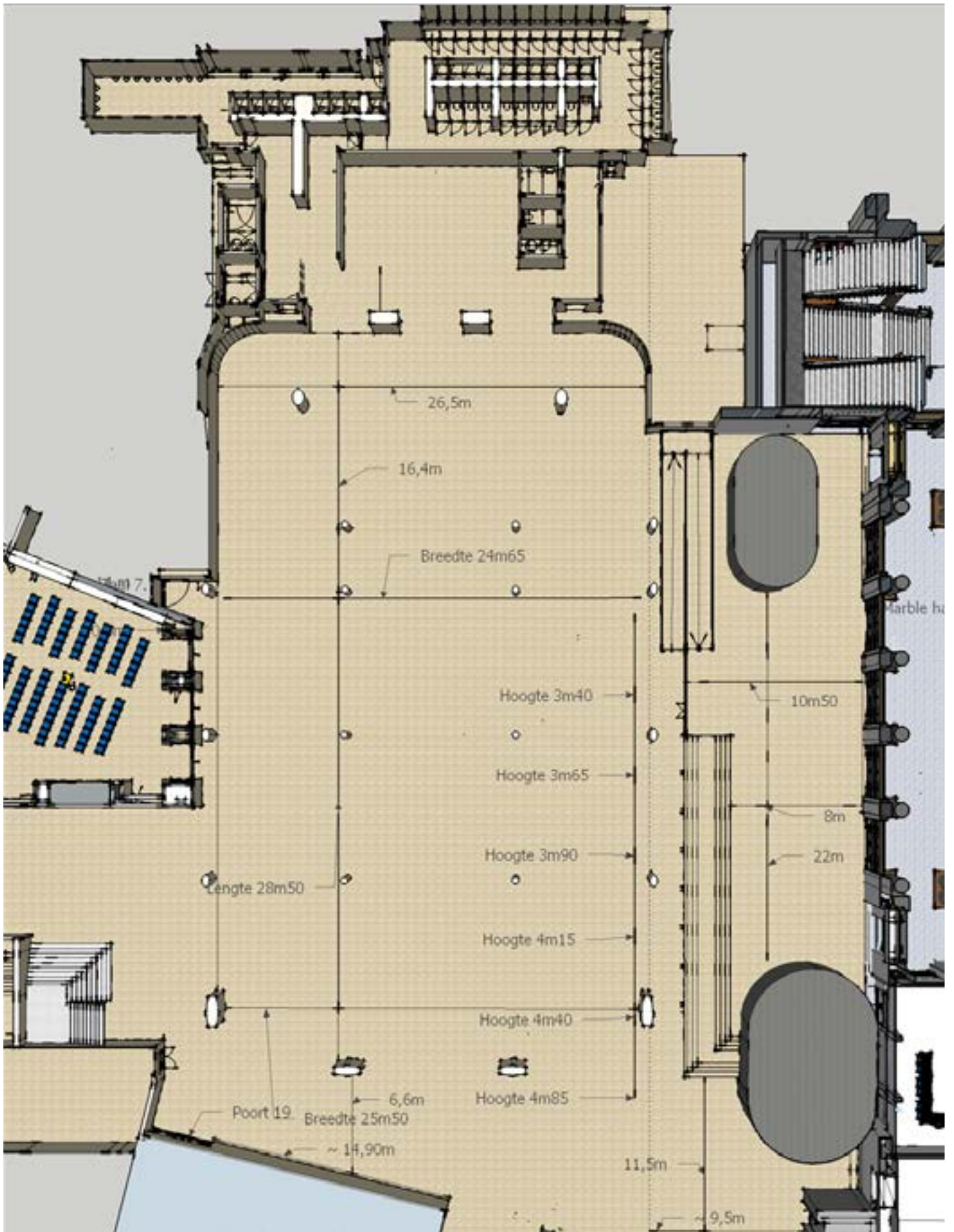


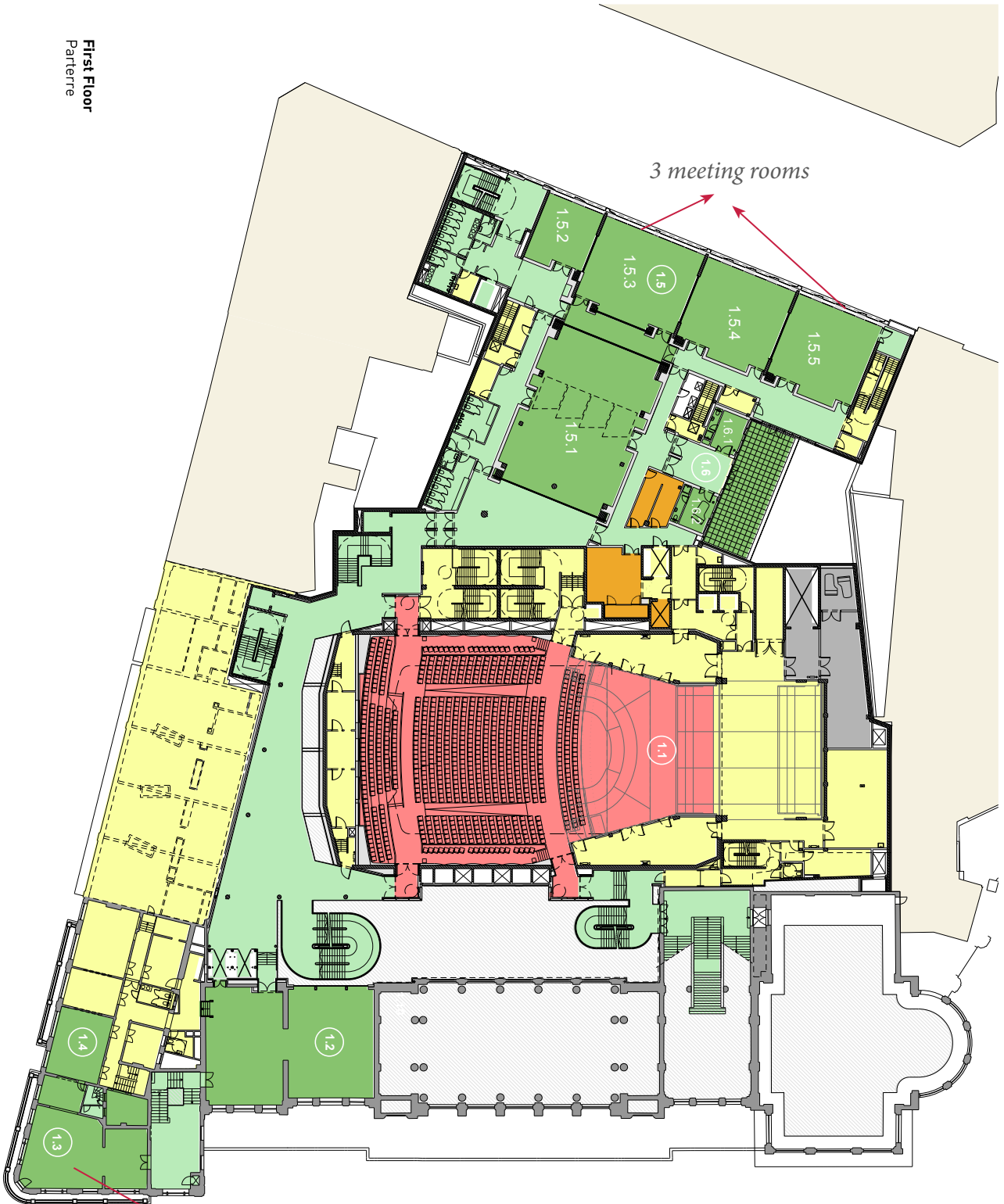
| Time  | Mon Tue | Wed 27/6<br>Hall Queen Elisabeth | Thur 28/6<br>Hall Queen Elisabeth | Thur 28/6<br>x4 rooms            | Fry 29/6<br>Hall Queen Elisabeth | Fry 29/6<br>x4 rooms             | Sat 30/6/2018<br>Hall Queen Elisabeth | Sat 30/6/2018<br>x4 rooms        | Sat 30/6/2018<br>Hands-on ShortPostCom |
|-------|---------|----------------------------------|-----------------------------------|----------------------------------|----------------------------------|----------------------------------|---------------------------------------|----------------------------------|--|
| 7u30  |         |                                  |                                   |                                  |                                  |                                  |                                       |                                  |  |
| 8u    |         | Pre                              |                                   |                                  |                                  |                                  |                                       |                                  |  |
| 8u30  |         | Conference                       |                                   |                                  |                                  |                                  |                                       |                                  |  |
| 9u    |         |                                  |                                   |                                  |                                  |                                  |                                       |                                  |  |
| 9u30  |         |                                  | Panel/Symp                        | Panel/Symp                       | Panel/Symp                       | Panel/Symp                       | Panel/Symp                            | Panel/Symp                       | Interactive Poster communication       |
| 10u   |         | Activities                       | coffee break                      | coffee break                     | coffee break                     | coffee break                     | coffee break                          | coffee break                     | Interactive Poster communication       |
| 10u30 |         |                                  |                                   |                                  |                                  |                                  |                                       |                                  | Interactive Poster communication       |
| 11u   |         |                                  | Keynote                           | Keynote                          | Keynote                          | Keynote                          | Panel/Symp                            | Panel/Symp                       | Interactive Poster communication       |
| 11u30 |         |                                  | Panel/Symp                        | Panel/Symp                       | Panel/Symp                       | Panel/Symp                       | Panel/Symp                            | Panel/Symp                       | Interactive Poster communication       |
| 12u   |         |                                  | Lunch                             | Lunch                            | Lunch                            | Lunch                            | Keynote                               | Keynote                          | Interactive Poster communication       |
| 12u30 |         |                                  |                                   |                                  |                                  |                                  | Plenary                               | Plenary                          | Interactive Poster communication       |
| 13u   |         |                                  |                                   |                                  |                                  |                                  | Lunch                                 | Lunch                            | Interactive Poster communication       |
| 13u30 |         | comp1 symposium                  | Keynote                           | Keynote                          | Keynote                          | Keynote                          | Keynote                               | Keynote                          | Interactive Poster communication       |
| 14u   |         |                                  | Panel/Symp                        | Panel/Symp                       | Panel/Symp                       | Panel/Symp                       | Panel/Symp                            | Panel/Symp                       | Interactive Poster communication       |
| 14u30 |         | comp2 symposium                  | coffee break                      | coffee break                     | coffee break                     | coffee break                     | coffee break                          | coffee break                     | Interactive Poster communication       |
| 15u   |         |                                  |                                   |                                  |                                  |                                  |                                       |                                  | Interactive Poster communication       |
| 15u30 |         | comp3 symposium                  | Keynote                           | Keynote                          | Keynote                          | Keynote                          | Keynote                               | Keynote                          | Interactive Poster communication       |
| 16u   |         |                                  | Panel/Symp                        | Panel/Symp                       | Panel/Symp                       | Panel/Symp                       | Panel/Symp                            | Panel/Symp                       | Interactive Poster communication       |
| 16u30 |         | comp4 symposium                  | Keynote                           | Keynote                          | Keynote                          | Keynote                          | Keynote                               | Keynote                          | Interactive Poster communication       |
| 17u   |         |                                  | Interactive Poster communication  | Interactive Poster communication | Interactive Poster communication | Interactive Poster communication | Interactive Poster communication      | Interactive Poster communication | Interactive Poster communication       |
| 17u30 |         | Opening                          | Interactive Poster communication  | Interactive Poster communication | Interactive Poster communication | Interactive Poster communication | Interactive Poster communication      | Interactive Poster communication | Interactive Poster communication       |
| 18u   |         |                                  | Interactive Poster communication  | Interactive Poster communication | Interactive Poster communication | Interactive Poster communication | Interactive Poster communication      | Interactive Poster communication | Interactive Poster communication       |
| 18u30 |         | Reception                        |                                   |                                  |                                  |                                  |                                       |                                  |  |
| 19u   |         |                                  |                                   |                                  |                                  |                                  |                                       |                                  |  |
| 19u30 |         |                                  | company                           | dinner                           | conference                       | dinner                           |                                       |                                  |  |
| 20u   |         | Chairman Dinner                  |                                   |                                  |                                  |                                  |                                       |                                  |  |
| 21u   |         |                                  |                                   |                                  |                                  |                                  |                                       |                                  |  |
| 22u   |         |                                  |                                   |                                  |                                  |                                  |                                       |                                  |  |

**IMPORTANT:**  
 Parallel sessions in 5 rooms:  
 - Main room 'Elisabeth'  
 - 4 Breakout rooms  
 - more small rooms for workshops

# Exhibition Hall





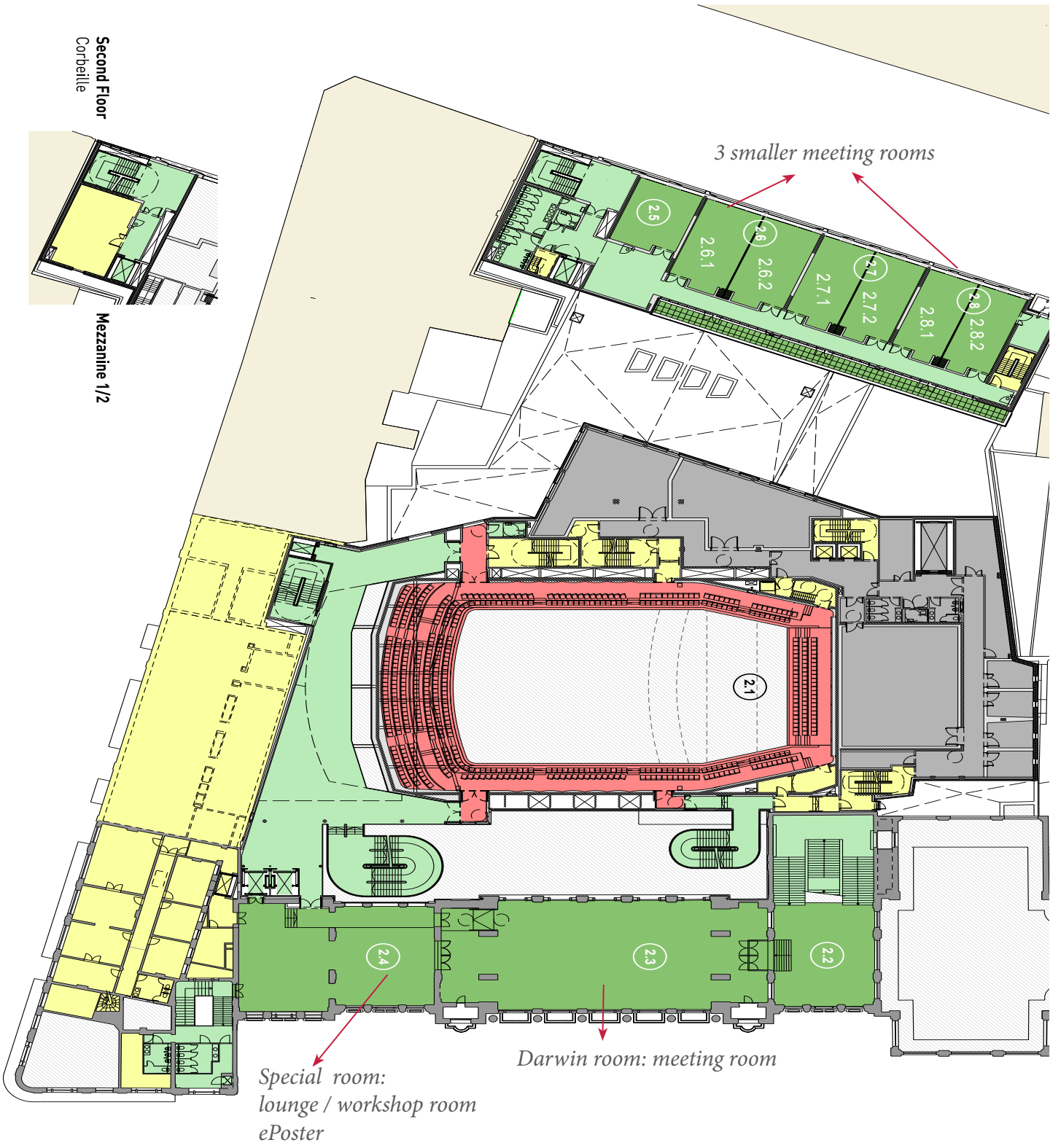


- LEGEND**
- Operational rooms
  - Public area
  - Meeting & Event rooms
  - Kitchens
  - Queen Elisabeth Hall
  - Royal Philharmonic Orchestra

*Company lounge*

*3 meeting rooms*

**First Floor**  
Parterre



- LEVEL 1/2**
- Operational rooms
  - Public area
  - Meeting & Event rooms
  - Kitchens
  - Queen Elisabeth Hall
  - Royal Philharmonic Orchestra

Second Floor  
Corbelle

Mezzanine 1/2

Special room:  
lounge / workshop room  
ePoster

Darwin room: meeting room

3 smaller meeting rooms





**EXHIBIT/SPONSORSHIP INFORMATION:** *This information will appear in conference publications exactly as you provide it. Please print legibly or type.*

Company Name:

Address:

City:  State:  Zip:

Tel:  Fax:  Email:

**PRIMARY CONTACT:** *This person will be the primary point of communication and will receive all information related to your participation*

Contact Name:  VAT:

Contact Phone:  Contact Email:

**PREFERRED SPONSORSHIP PACKAGE(S):**

**We are interested in the following extras:**

- Bronze Package 1.500 Euro
- Silver Package 5.000 Euro
- Gold Package 15.000 Euro
- Platinum Package 40.000 Euro
- Platinum<sup>+</sup> Package 50.000 Euro
- Platinum<sup>++</sup> Package 60.000 Euro
- Diamond Package 80.000 Euro

- Wifi Internet sponsoring
- Full Congress App
- Push messages during the congress
- E-poster stations and system
- Lanyard sponsoring
- Pen sponsoring
- Congress Bag sponsoring
- Scientific Congress Fund:  
aid to delegates to participate in the scientific congress.

Our team will contact you, with more detailed information regarding the selected items.

Please submit application to:  
**Semico NV**  
 Luc Niville  
 16-18 Korte Meer  
 B- 9000 Ghent  
 Ci2018@semico.be  
 Fax : + 32 (0)9 233 85 97

**Signature:**

**Date:**

# EXHIBITOR & SPONSORSHIP PROSPECTUS



**Ci2018**  
.....  
*15<sup>th</sup> International  
Conference on  
Cochlear Implants and  
Implantable Auditory Technologies*  
.....  
*Antwerp, Belgium  
June 27- 30, 2018*

**2018**

Join us next year!  
*2018 International  
Conference on  
Cochlear Implants*

